



Key Land Position along Root Bay

Lithium Trend

Northwestern Ontario

Investor Presentation

March 2024



# FORWARD LOOKING STATEMENTS

This presentation contains certain statements that may be deemed “forward-looking statements”. All statements, other than statements of historical fact, that address events or developments that Xplore Resources Inc. (“Xplore”) expect to occur, are forward-looking statements.

Forward-looking statements are statements that are not historical facts and are generally, but not always identified by the words “expects”, “plans”, “anticipates”, “believes”, “intends”, “estimates”, “projects”, “potential” and similar expressions, or that events or conditions “will”, “would”, “may”, “could” or “should” occur.

Although Xplore believe the expectations expressed in such forward-looking statements are based on reasonable assumptions, such statements are not guarantees of future performance and actual results may differ materially from those in the forward-looking statements. Factors that could cause the actual results to differ materially from those in forward-looking statements include market prices, exploration and production successes or failures, continued availability of capital and financing, inability to obtain required shareholder or regulatory approvals, and general economic market or business conditions.

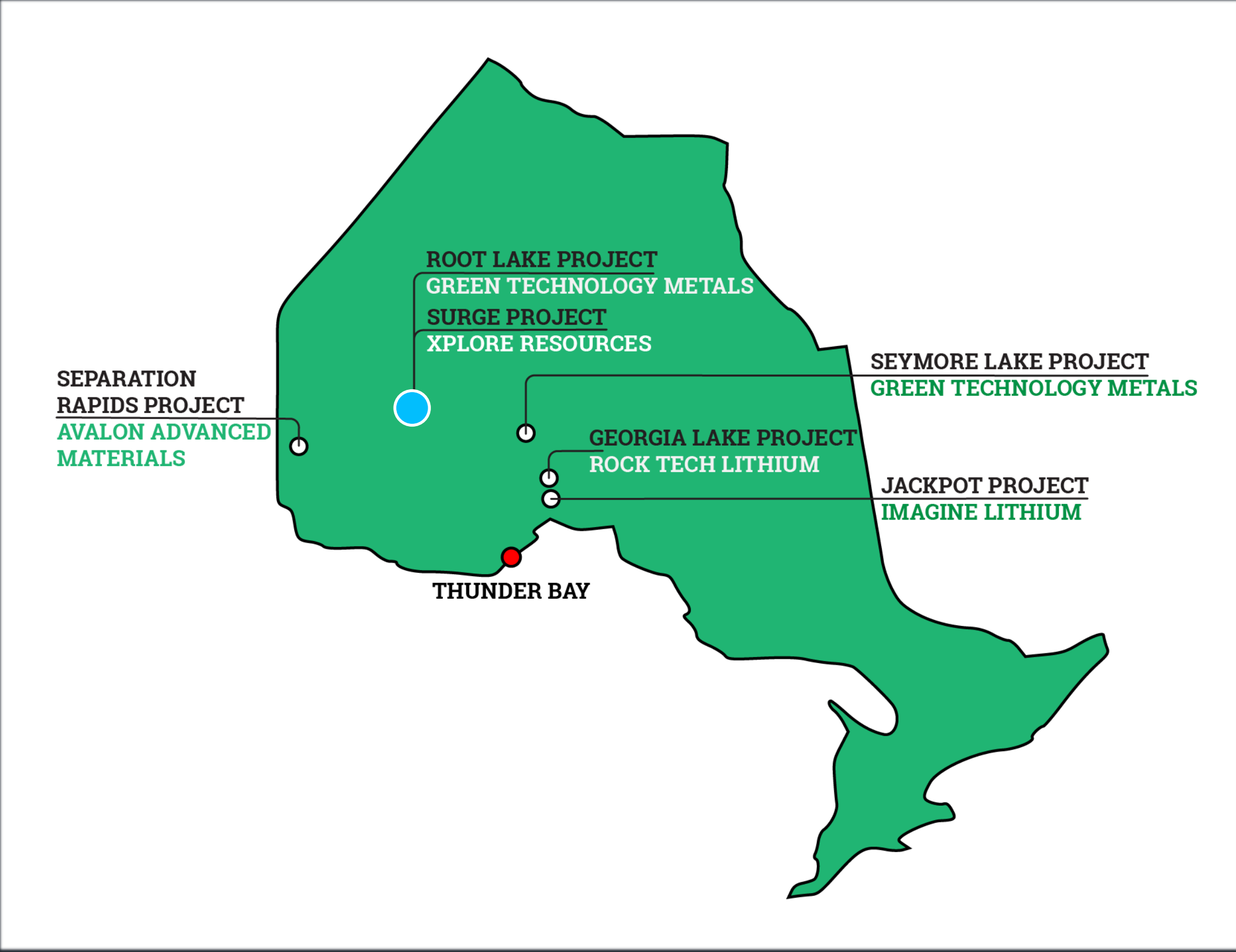
Forward-looking statements are based on the beliefs, estimates and opinions of Xplore management on the date the statements are made.

Karly Oliver, P.Geo., has approved the information contained in this presentation. Ms. Oliver is a director of the Company and a Qualified Person pursuant to National Instrument 43-101.

# ONTARIO, CANADA

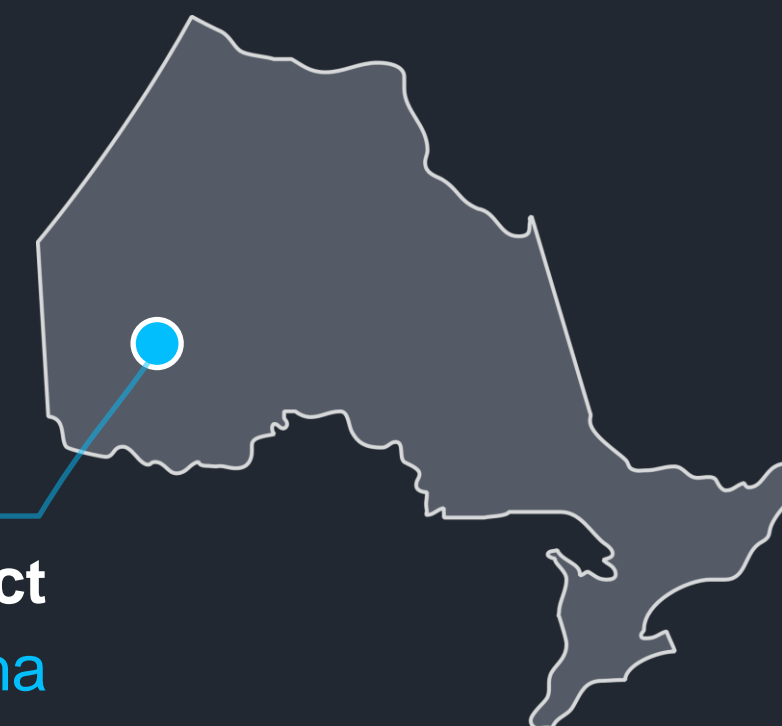
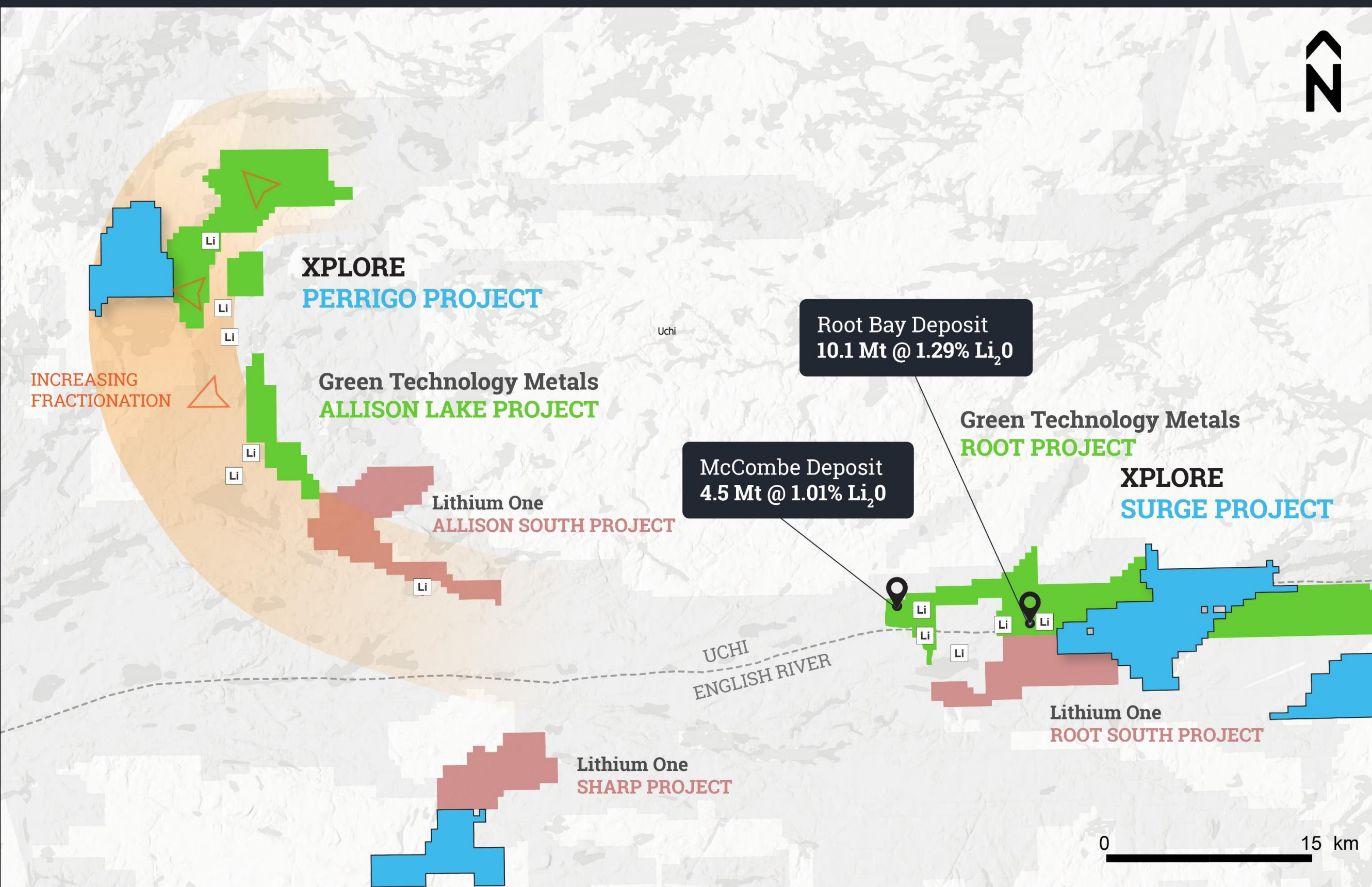
Top-tier mining jurisdiction and leader in the critical minerals sector

- Global automotive giants pledge **C\$25 billion** towards battery production and mining ventures.
- Strategic Innovation Fund of **C\$1.5 billion** allocated to foster project development and expedite mine construction.
- Ontario Infrastructure Bank's **C\$3 billion** investment boosts critical infrastructure, with the province hosting six major car manufacturers and superior access to utilities and roads.



# XPLORE RESOURCES

## Key Land Position along Root Bay Lithium Trend



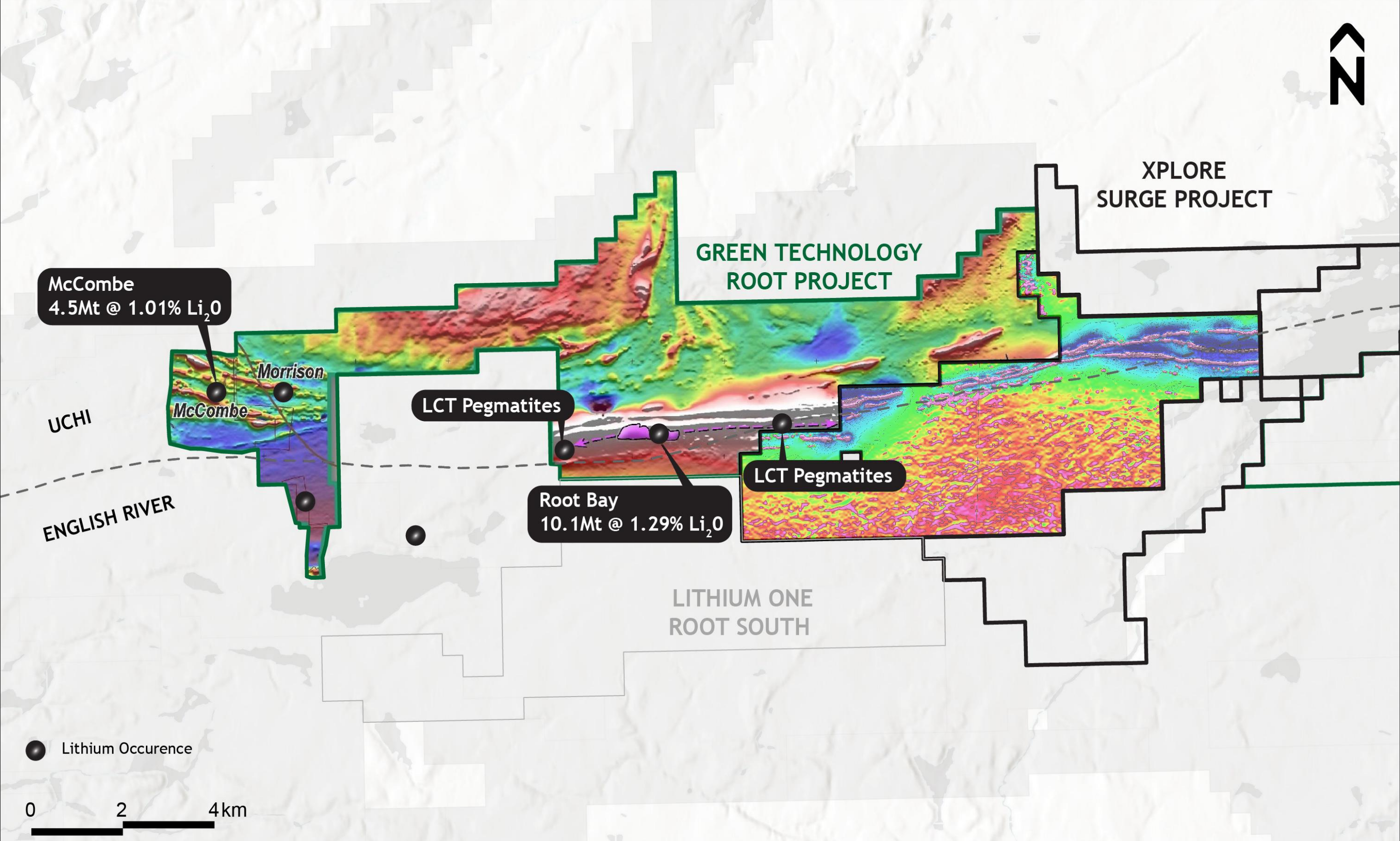
**Surge Project**  
6,900 ha

**Perrigo Project**  
3,400 ha

- Lithium exploration hot spot following the discovery and expansion of the Root Bay lithium deposit (Green Technology Metals)
- **Surge** and **Perrigo** properties are located on the margins of fertile peraluminous granites; the ideal setting for lithium-cesium-tantalum (LCT) pegmatites
- Lithium projects in Ontario are overwhelmingly located near terrain boundaries such as the Uchi – English River subprovince boundary

# SURGE LITHIUM PROJECT

10 km of highly prospective trend on strike of growing Root Bay Deposit



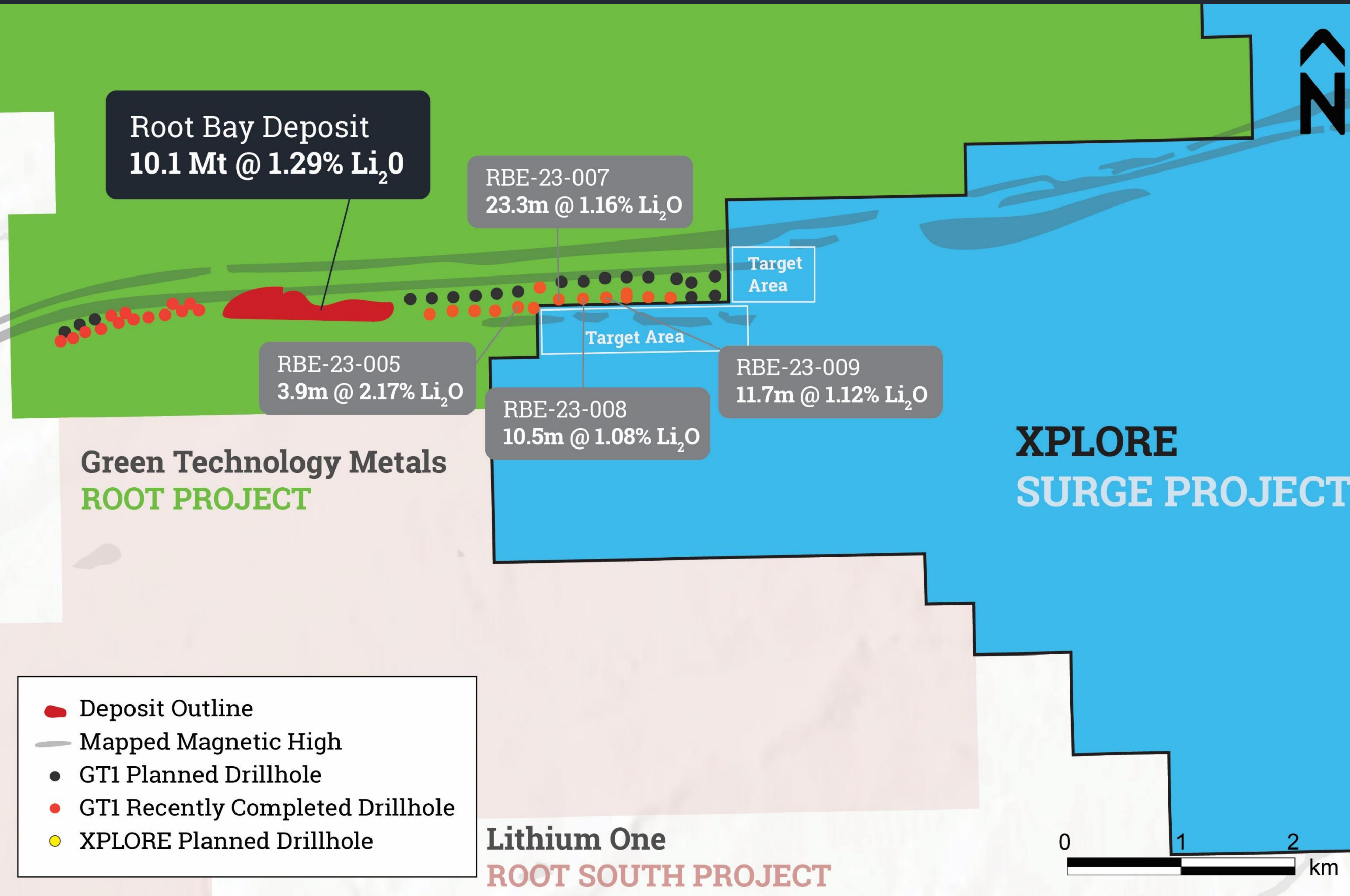
- Over 10 km of strike along prospective trend associated with lithium bearing pegmatite at the Root Bay Deposit
- Abundant pegmatite mapped on property



Surge pegmatite outcrop (2023)

# SURGE LITHIUM PROJECT

Drill ready targets along the new Root Bay Lithium Trend



- On trend and within 1.5 km of Green Technology Metals' Root Bay Deposit: 10.1 Mt at 1.29%  $\text{Li}_2\text{O}$
- New drill results near property boundary including **23.3 m of 1.16%  $\text{Li}_2\text{O}$**  and **11.7 m of 1.12%  $\text{Li}_2\text{O}$** .
- Over 10 km of strike along prospective trend associated with lithium bearing pegmatite at the Root Bay Deposit
- Abundant pegmatite mapped on property



Surge pegmatite sample (2022)

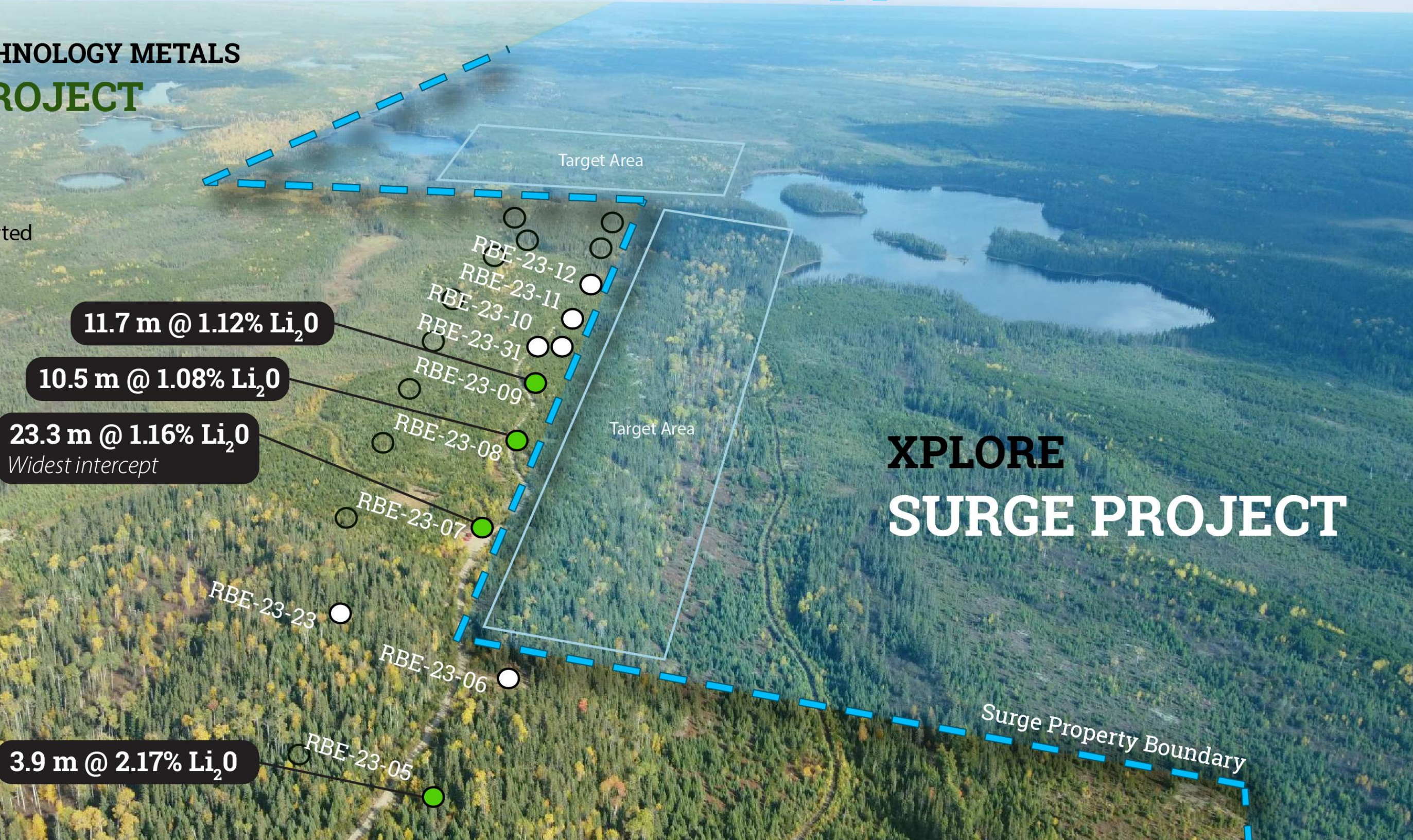
# SURGE LITHIUM PROJECT

25 m from new Root Bay East Lithium discovery



GREEN TECHNOLOGY METALS  
ROOT PROJECT

- Drill Hole (GT)
- Results Reported
  - Not Reported
  - Planned



## XPLORE SURGE PROJECT

- The Surge property is located 25m from the Root Bay East discovery
- Drilling results reported by Green Technology Metals include:

23.3 m of 1.16%  $\text{Li}_2\text{O}$

10.5 m of 1.08%  $\text{Li}_2\text{O}$

11.7 m of 1.12%  $\text{Li}_2\text{O}$

- Drill target areas have been identified and permitting is underway

# WORK PROGRAM

## Current and Upcoming Catalysts

2024

Q1

### SURGE PROJECT

- Permitting
- Diamond Drilling
- Prospecting, mapping and sampling - Q2 2024
- Outcrop stripping
- Target Generation - evaluate targets for further drill testing

Q2

Q3

Q4





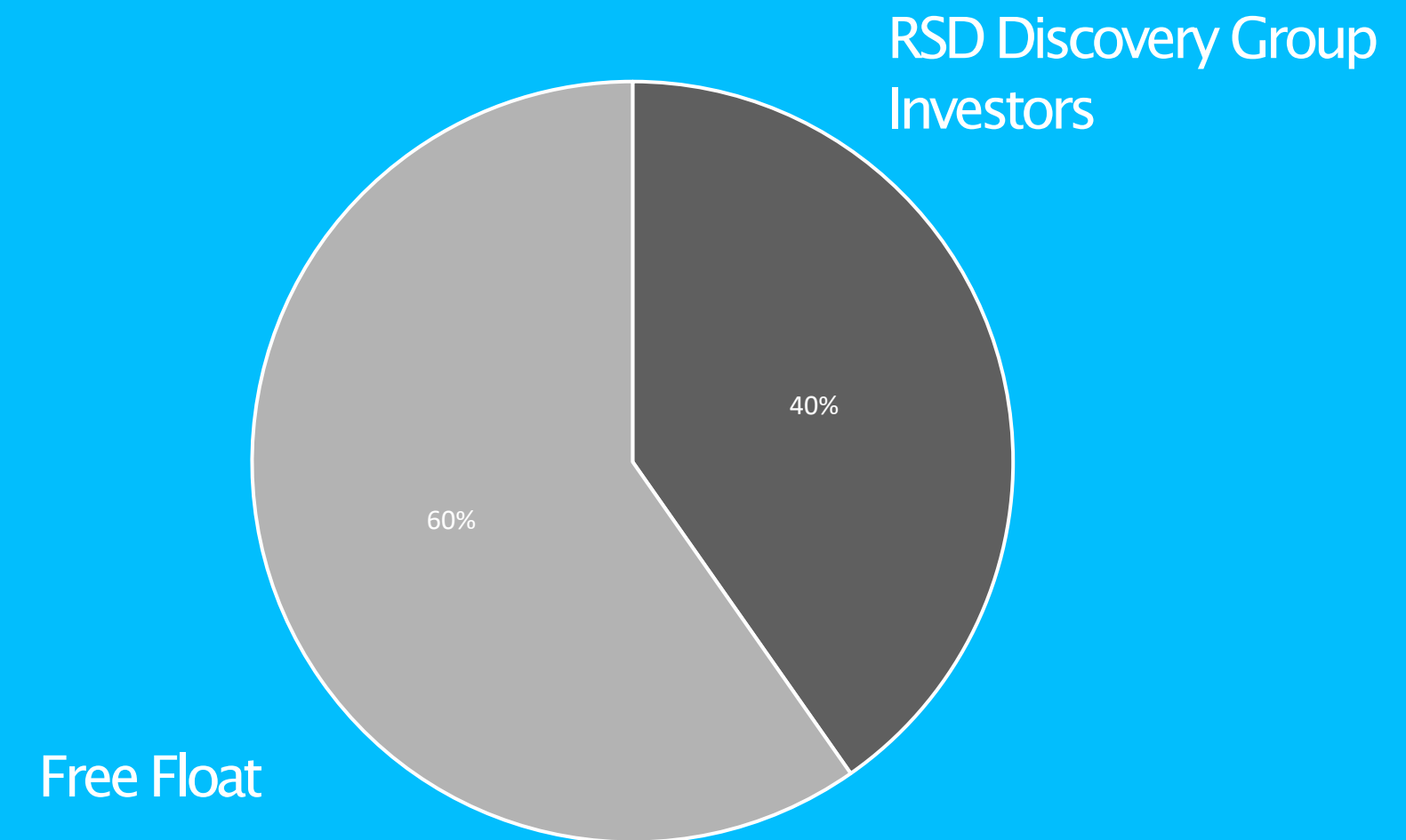
# SHARE CAPITAL

## TSX.V:XPLR

As of February 23, 2024

<b>Share Price</b>	<b>\$0.11</b>
<b>Outstanding</b>	<b>29.3 M</b>
<b>Warrants*</b>	<b>12.6 M</b>
<b>Options</b>	<b>2.7 M</b>
<b>Fully Diluted</b>	<b>44.6 M</b>
<b>Market Cap. (Basic)</b>	<b>\$3.2 M</b>

*\*11.8M warrants issued in Dec. 2023 placement*



# MANAGEMENT TEAM

## **DOMINIC VERDEJO**

*President, CEO & Director*

Mr. Verdejo has 15 years experience in the venture capital markets as president of 7 different companies. He is President, Chief Executive Officer & Director at Taura Gold Inc, and Director of Lion Rock Resources and Lithium One Metals (former President, Chief Executive Officer). In the past occupied the position of Chairman at Pacton Gold, Director at Bullion Gold Resources, President, Chief Executive Officer & Director at G Mining Ventures, Vice President-Corporate Development for Bonterra Resources, and President, Chief Executive Officer & Director at Viking Gold Exploration.

## **WESLEY C. (WES) HANSON, P.GEO.**

*Executive Chairman & Director*

Mr. Hanson has 40 years of industry experience including mineral exploration, engineering, construction, operations and corporate management. He is a Consulting geologist with Kilborn - SNC Lavalin and has held senior management and executive roles with Kinross Gold, Western Goldfields, Silver Bear Resources and Unigold. He is the former President and CEO of Noront Resources (now Ring of Fire Metals).

## **KARLY OLIVER, P.GEO.**

*Director*

Ms. Oliver is a professional geologist with 15 years of mineral exploration experience specializing project management and mineral resource delineation. Ms. Oliver serves as a technical consultant to publicly listed mineral exploration companies, particularly in gold and battery metals projects. She holds a Professional Geoscientist designation in British Columbia and has a Bachelor's in Earth and Ocean Sciences from the University of British Columbia.

## **RICHARD BOULAY, B.SC.**

*Director*

Mr. Boulay is a Geologist with over 40 years of experience in the exploration and mining industries in Canada and internationally, including 15 years of mining and infrastructure financing experience gained with Bank of Montreal, Royal Bank of Canada and Bank of Tokyo. He has arranged financing of numerous underground and open pit mining projects, hydro and diversion dams, nuclear reactors, pipelines and offshore oil exploration and production platforms. He has extensive experience in the management and financing of public companies in Canada and the United States.

## **JOSEPH MEAGHER, CPA, CA**

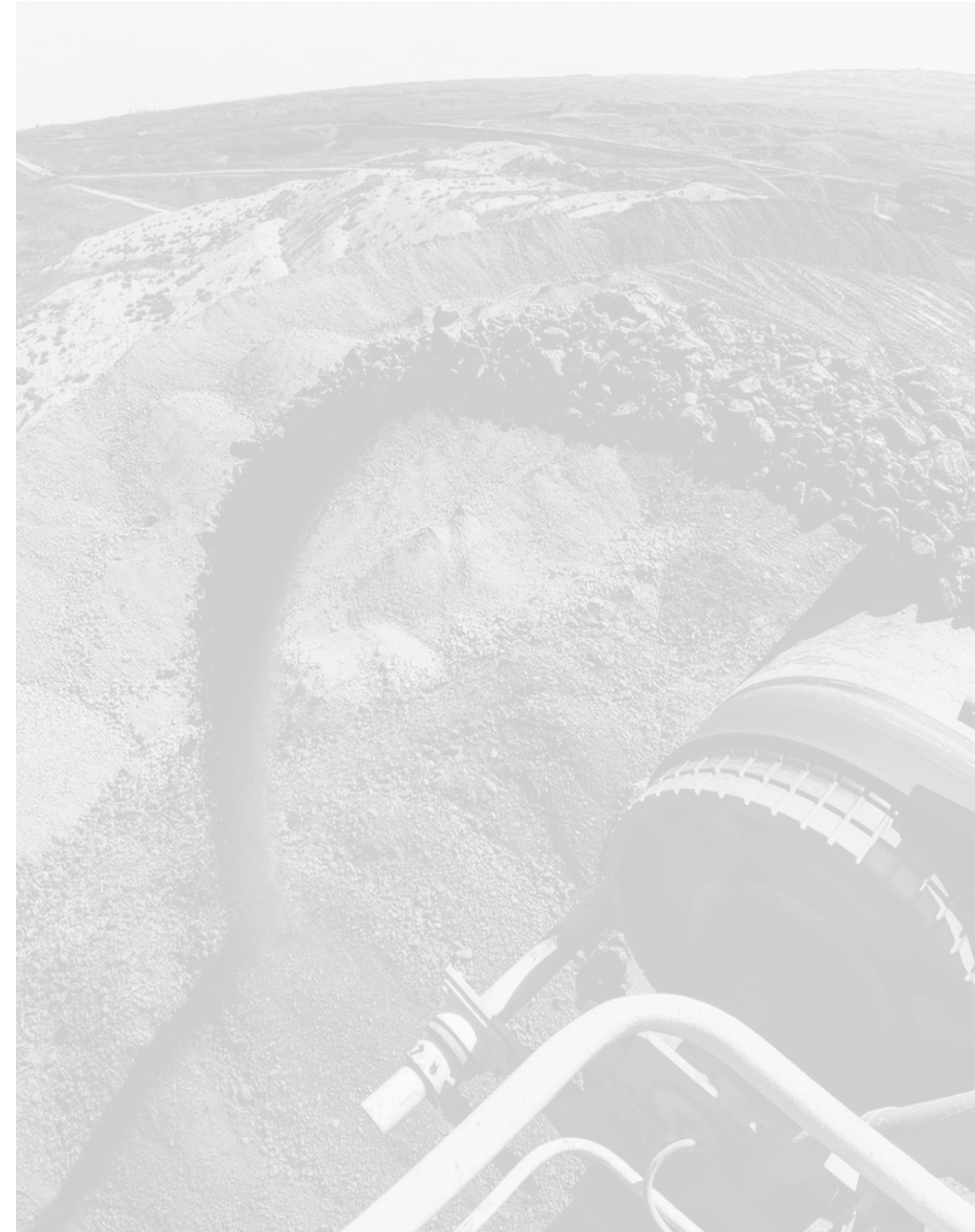
*CFO*

Mr. Meagher has extensive experience working with publicly listed, natural resource companies. He holds a Bachelor of Commerce from the University of British Columbia, became a Chartered Professional Accountant (CPA, CA) in 2008, and obtained the Chartered Director (C.Dir.) designation from The Directors College (a joint venture between McMaster University and The Conference Board of Canada) in 2017.

## **CHARLES EDGEWORTH, MBA**

*Director*

Mr. Edgeworth is a Corporate banker with 25 years of experience in debt, equity and project finance as well as cash management and risk mitigation. He has advised and structured numerous financings for junior and senior mining companies globally, and is responsible for corporate banking in Europe and Africa for Export Development Canada. He serves as a senior officer in the Royal Canadian Navy.







TSX.V - [XPLR](#)

Suite 1615 - 200 Burrard St.  
Vancouver, British Columbia  
V6C 3L6

[info@xploreresources.com](mailto:info@xploreresources.com)

